



TM

# SRI LOGILLU

DEVELOPERS PRIVATE LIMITED  
MARKETING & SERVICES PVT. LTD.  
AN ISO 9001:2015 CERTIFIED COMPANY

సాంప్రదాయాల పుట్టినిల్లు

**Corporate Office**

H.No. 3-12-73, 2nd Floor, Harsha Towers,  
Rocktown Colony, L.B. Nagar, Hyderabad-74  
Phone : 040- 4853 2018

**Branch office :**

H.No. 23-6-218/5, 2nd & 3rd Floor,  
Opp. Zoo Park,  
Hunter Road, Hanumakonda.

Email : [info@srilogillu.com](mailto:info@srilogillu.com) / [www.srilogillu.com](http://www.srilogillu.com)

**Tollfree : 1800 570 3999**



TM

## SRI LOGILLU

DEVELOPERS PRIVATE LIMITED  
MARKETING & SERVICES PVT. LTD.  
AN ISO 9001:2015 CERTIFIED COMPANY

సాంప్రదాయాల పుట్టినిల్లు

*We make  
your  
Dreams  
come true*



# MOUNTAIN VIEW COUNTY

@

## Premium Villa Plots



NOTE : This brochure is only a conceptual presentation of the project and not a legal offering.

# The Best Vastu The Best Planning For Beautiful Living



## Premium Villa Plots



### Welcome to Srilogillu

The company is founded by the finest breed of directors from realty industry having an outstanding track record of more than a decade in the real estate industry. Since inception the company is engaged into property development and has colonized and made various landmarks in the various prime locations. **Sri Logillu** has been floated by a team of young marketing professionals with vast experience in real estate field. With ever growing clientele and satisfied customers, srilogillu believes giving true value for money by offering clear titled projects with well developed facilities. Long Observations, Convertibility to be feel continuously. It is easy to construct as your aspiration. All in all in one as the **SriLogillu** As we known Our Focus is the Bright Future of your family.

The company is founded by the finest breed of record for more than a decade in the real estate industry.



**SRI LOGILLU**<sup>TM</sup>  
DEVELOPERS PRIVATE LIMITED  
MARKETING & SERVICES PVT. LTD.  
AN ISO 9001:2015 CERTIFIED COMPANY  
సాంప్రదాయాల పుష్టినిల్లు

## WARANGAL

- GOLDEN LEAF @ [WARDHANNAPET](#)  
**ONGOING PROJECT**
- MOUNTAIN VIEW COUNTY @ [AMMAVARIPET](#)

## HYDERABAD

### Completed Projects



- LOGILLU @ [GUDUR](#)
- LOGILLU - I @ [GUDUR](#)
- LOGILLU - II @ [GUDUR](#)
- PUDAMI-I @ [LEMOOR](#)
- PUDAMI - II @ [NEDNUR](#)
- PUDAMI- III @ [YADADRI](#)
- PUDAMI-IV @ [BIBINAGAR](#)
- PUDAMI - V @ [EDULABAD](#)
- PUDAMI- VI @ [ALAIR](#)
- PUDAMI- HIGHWAY@ [PAGADIPALLY](#)
- PUDAMI-VII @ [MASAIPET](#)
- PUDAMI - VIII @ [BIBINAGAR](#)  
**ONGOING PROJECTS**
- PUDAMI GREENLEAF @ [ANANTARAM](#)
- PUDAMI PEACOCK @ [BACHARAM](#)





# MOUNTAIN VIEW COUNTY

## Premium VILLA Plots - GWMC LAYOUT @AMMAVARIPET

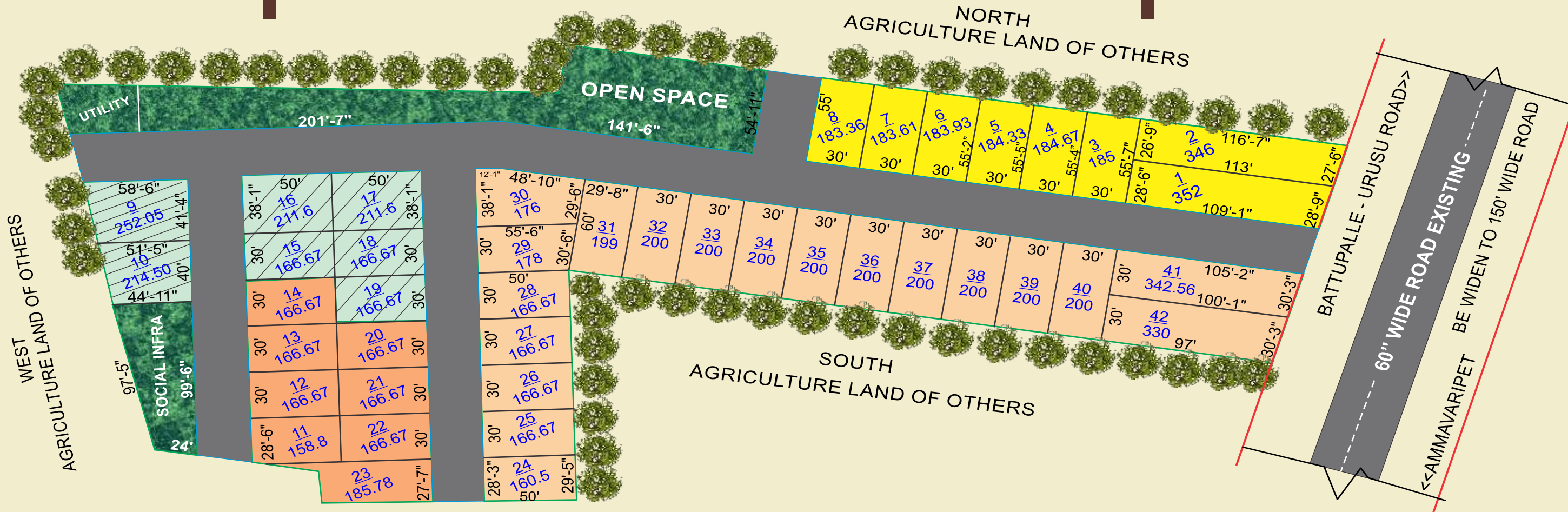
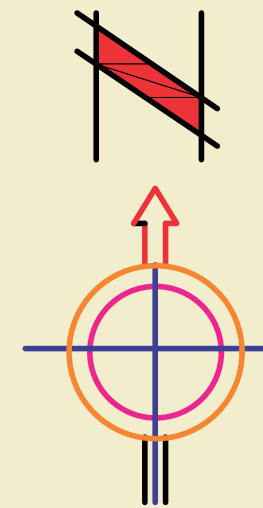
Get set to step into a truly experiential world replete with strategic location and futuristic facilities - Mountain View County. The latest and most prestigious residential layout from **Srilogillu Developers Pvt. Ltd.** is an ecosystem designed to upgrade residents to premium living, to the GWMC residential layout features prime villa plots devised to facilitate global lifestyles. The recently sanctioned 150 ft road abutting towards International Airport flanks the layout priming it for rapid appreciation. The vantage location of the layout is easily accessible from most commercial centers. The venture is in close vicinity to a host of landmarks and more. The location is also very close to important commercial destinations and residential projects like Hanumakonda City, Brilliant design, elegant elevation, smart amenities and easy connectivity define the premium project.



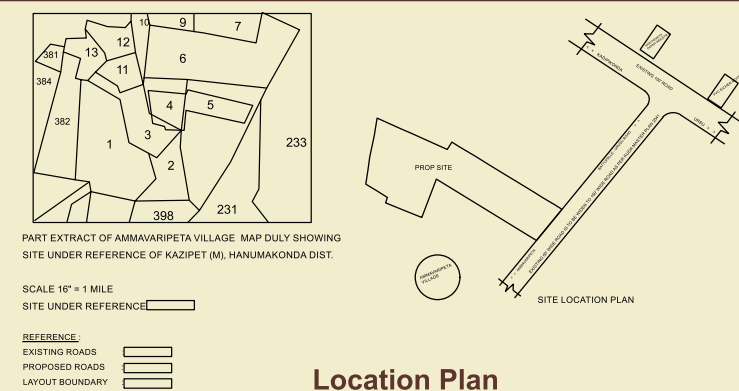
**SRI LOGILLU**<sup>TM</sup>  
DEVELOPERS PRIVATE LIMITED  
MARKETING & SERVICES PVT. LTD.  
AN ISO 9001:2015 CERTIFIED COMPANY  
సాంప్రదాయాల పుట్టినిల్లు







**GREATER WARANGAL MUNICIPAL CORPORATION**  
PLAN SHOWING THE PROPOSED LAY-OUT  
BEARING SY.No's 4/3/1, 3/B/1, 4/3, 4/1/2/2, 5/C/1,  
3/B/2, 5/B/3/1/2, 5/E, 5/B/3/2, 5/B/1, 4/1/3 OF  
AMMAVARIPET VILLAGE, KAZIPET MANDAL ,  
HANUMAKONDA DIST.



TOTAL LAYOUT AREA	12,210 SQ.MTS	(OR)	14,602 SQ.YDS	(03 AC - 01 GTS)
OPEN SPACE AREA	1,102 SQ.MTS	(OR)	1,317.9 SQ.YDS	(9%)
UTILITY AREA	123 SQ.MTS	(OR)	147.1 SQ.YDS	(1%)
PROP ROADS AREA	3,610 SQ.MTS	(OR)	4,317.3 SQ.YDS	(29.6%)
SOCIAL INFRA	306.5 SQ.MTS	(OR)	366.5 SQ.YDS	(2.51%)
NET PLOT AREA	7,068.5 SQ.MTS	(OR)	8,453 SQ.YDS	(57.89%)
MORTGAGE AREA	1,154 SQ.MTS	(OR)	1,380 SQ.YDS	(16.3%)
PLOT NO : 9, 10, 15, 16, 17, 18, 19 TOTAL 07 PLOTS				



DEVELOPERS PRIVATE LIMITED  
MARKETING & SERVICES PVT. LTD.  
AN ISO 9001:2015 CERTIFIED COMPANY

## సాంప్రదాయాల పుట్టినిల్లు



# MOUNTAIN VIEW COUNTY







## Amenities & Features

- \* GWMC Layout
- \* Villa Plots Project
- \* All CC Roads
- \* Rainwater Harvesting Pits
- \* Footpaths for Entire Venture
- \* Underground Electricity
- \* Underground Drainage System
- \* Grand Entrance Arch
- \* Avenue Plantation
- \* Pollution Free Environment
- \* Landscaping Park
- \* Water Pipeline
- \* Immediate Registration
- \* Bank Loan Available
- \* Immediate Construction Villa
- \* Surrounded by Compound Wall with Solar Fencing
- \* All Roads with LED street Lights
- \* Signage of Plot Numbers and signage for all roads







# MOUNTAIN VIEW COUNTY

## STRATEGIC LOCATION

## VENTURE at AMMAVARIPET (15 minutes from Mamnoor Airport)

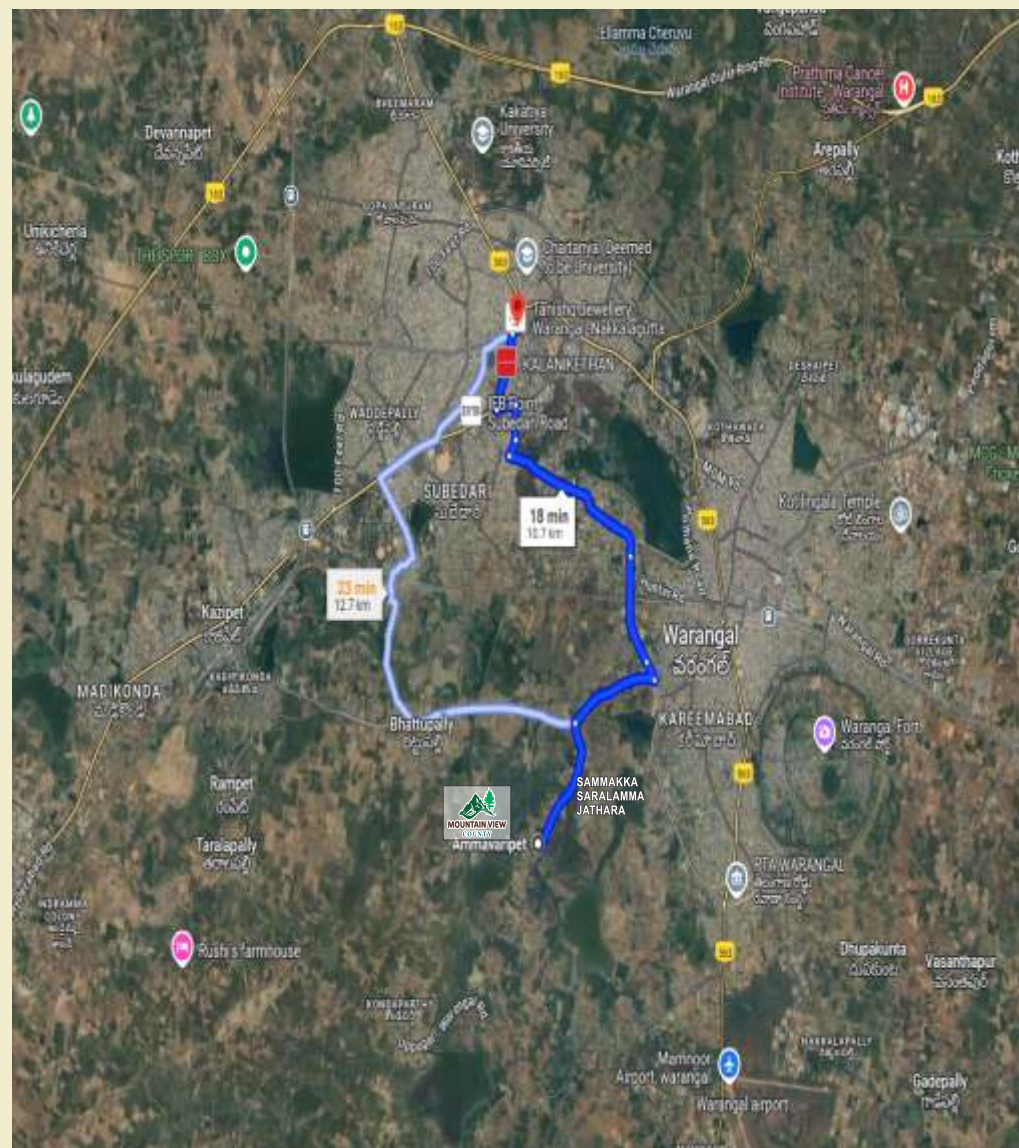
- ◆ KENDRIYA VIDYALAYA SCHOOL WARANGAL
- ◆ GANAPATHY ENGINEERING COLLEGE
- ◆ SAMMAKKA SARALAMMA JATARA
- ◆ MEDI CARE GENERAL HOSPITAL
- ◆ MEDI COVER HOSPITAL
- ◆ NEAR TO KAZIPET RAILWAY STATION
- ◆ TALLAPADMAVATHI SCHOOL & COLLEGES
- ◆ NATIONAL INSTITUTE OF TECHNOLOGY

A Location of convenience  
MADE FOR YOU.

Abutting Project facing 150 ft Road

Vintage location that's in close vicinity to a Host  
of Milestone destinations

- ◆ 15 MIN. FROM MAMNOOR AIRPORT
- ◆ 10 MIN. FROM WARANGAL RAILWAY STATION
- ◆ 10 MIN. FROM KAZIPET RAILWAY COACH FACTORY
- ◆ 10 MIN. FROM KAZIPET RAILWAY STATION
- ◆ 10 MIN. FROM BHADRAKALI TANK BUND
- ◆ 15 MIN. FROM ZOO PARK
- ◆ 15 MIN DRIVE FROM ROMPUR IT HUB
- ◆ 20 MIN DIRVE FROM DPS KARUNAPURAM



**SRI LOGILLU**  
DEVELOPERS PRIVATE LIMITED  
MARKETING & SERVICES PVT. LTD.  
AN ISO 9001:2015 CERTIFIED COMPANY  
**సాంప్రదాయాల పుట్టినిల్లు**





